



CHERWELL

BESPOKE INTERIOR SPECIALISTS

CORPORATE PROFILE

www.cherwell.me

CONTENTS

OUR BUSINESS	05
CORE SERVICES	06
SUPPORT SERVICES	11
OUR STRENGTHS	12
HEALTH & SAFETY	20
OUR QUALITY	22
OUR ENVIRONMENT	25
CASE STUDIES	26



OUR BUSINESS

Cherwell, a renowned fit-out and build provider, offers turnkey solutions for both commercial and residential projects. With years of experience comprising ultra-modern workmanship, innovative techniques and a friendly approach, we pride ourselves in delivering high-end, unique projects for our clients. Our exemplary work is complemented by our expert in-house contracting teams, manufacturing staff, designers, engineers and project management. Our business is built on trust earned from our extremely satisfied clients based on our design, execution, quality and time management.

CORE SERVICES

Our fundamental services can be applied to a variety of spaces which include residences, offices, F&B outlets, schools, clinics and other commercial premises. With our design, manufacturing and fit-out capabilities, we can operate as a lead contractor, or offer integrated services to best suit your needs.



- Schematic and detailed Interior Design
- Complete fit out works for residences and offices
- Gypsum works, MEP and HVAC
- Handcrafted kitchens, dressing rooms, and specialist cabinetry
- Bespoke vanity areas and bathroom refurbishment
- Playrooms, entertainment centres, and home spas
- Boardrooms, offices, libraries, and retail
- Bespoke furniture manufacturing
- Upholstery services
- Specialist metal work
- Outdoor landscaping solutions
- Furniture layouts and creation
- Concepts / Mood boards
- Material selection (Material boards)
- Impressions / 3D perspectives / sketches
- Shop drawings for manufacturing
- FF & E
- Dressing and styling





SUPPORT SERVICES

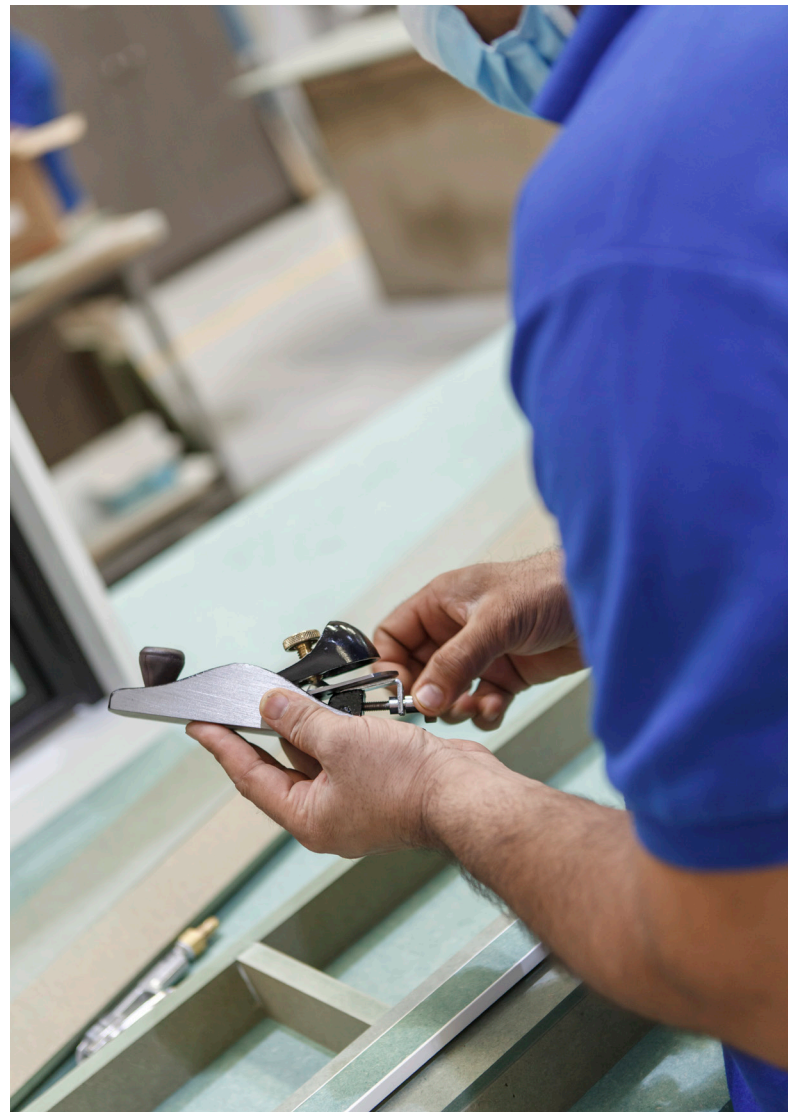
Giving our clients a holistic suite of services is our prime objective, which is why our project managers continuously work behind the scenes to ensure your project runs like a well-oiled machine. Our support services include, but are not limited to:

- Feasibility studies, site visits, and space analysis
- Construction documentation
- Applications to authorities including master developers,
-Dubai Municipality, Trakhees, DDA and DEWA
- Approvals / Permits
- Specification and sourcing of materials and F, F & E.

OUR STRENGTHS

With over 400 highly skilled staff across all our departments, Cherwell also own a purpose-built 120,000 sq. ft. facility in Dubai that houses our design, planning and management teams as well as our production departments. These departments include joinery, paint and finishes, metal works, marble, stone and glass finishing as well as an upholstery studio. These departments are supported by the latest software, technology and machinery which is operated by experienced technicians to enable quicker production times, less waste and superb accuracy and quality.





Cherwell also welcomes clients to their 9,000 sq. ft. of showrooms to view the precision of their work across all the disciplines but to also select materials from a carefully curated library of items from around the world. Cherwell have also developed strong relationships with valued suppliers and providers both locally and from further afield so can help clients select collaborators for projects based upon their experience.

Our contracting division is supported by a team of qualified, Dubai Municipality, Trakhees, DDA, DCCA and DEWA registered Engineers who are experts in approval and submission processes with all of the authorities and master developers. Our experienced Estimators, Planners, Procurement Officers, and Project Managers are responsible for keeping our on-site teams organized. We also work with a trusted network of sub-contractors for full turnkey services.



With a number of the latest machines provided by the best suppliers in Europe, our production departments are aided by their speed and accuracy.

These machines include

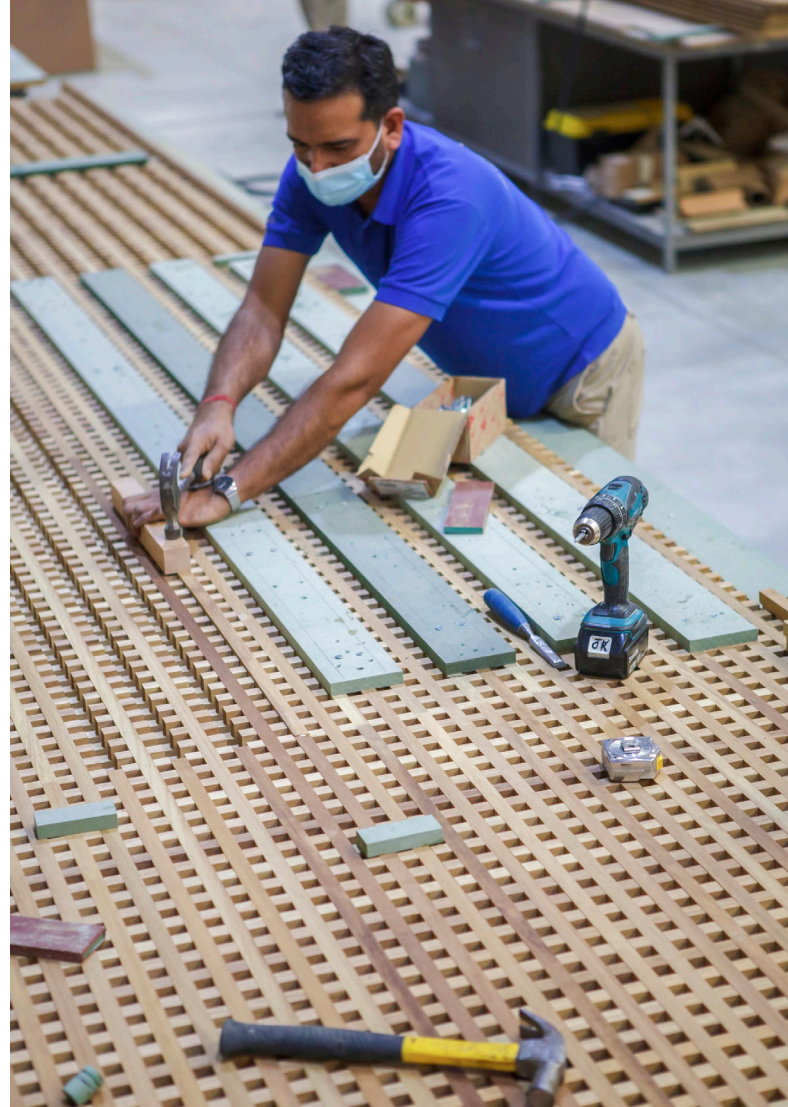
- Beam saw
- CNC 5 Axis
- CNC 3 Axis
- Cyflex boring machine
- Edge banding machines
- Flat bed boring machine

- Sanding machines
- Multiblade rip saws
- Radial arm saws
- Planing machines
- Spindle moulder and Lathes
- Automatic through feeders
- Artcam machine
- Automatic panel saws
- Veneer splicing machine
- Veneer presses
- Water jet
- Stone CNC
- UV Paint line



HEALTH & SAFETY

Our commitment to the highest standards of health and safety starts with our in-house qualified and authority approved Health and Safety Officers who ensure our staff are trained in accident prevention, personal safety procedures and first aid. All our sites are mandated with safe working practices both for our staff and our sub-contractors. Our teams are led by senior management members who are all industry professionals with a strong background in construction project management and engineering. It is their experience and innovation that preserves our healthy business practices.



OUR QUALITY

Our responsibility in maintaining quality standards are monitored at every stage of a project. All sites and production teams have designated quality control supervisors who are responsible for quality management. Our commitment to quality is extended to all our subcontractors or third parties and delighted clients is our measure of success.





OUR ENVIRONMENT

Our dedication to environmental sustainability is spread across all our products and services. Our advanced software and machine technologies minimize waste, our paint department operates within sealed air pressure environments and we use the latest water based paints which we mix on site to exact specifications and quantities minimizing waste.

We are passionate about reducing our carbon footprint and thereby adhere to the three principles of reducing, reusing and recycling. Our commitment is demonstrated by our purpose-built factory that features a full solar panelled roof and a water treatment plant to recycle all our wastewater to support our landscaping. Our pledge to the environment also includes our investment in renewable forestry in Africa which is carefully and environmentally managed.

SOME RECENTLY COMPLETED PROJECTS



PRIVATE VILLA

LOCATION: Palm Jumeirah

WORK: Complete villa renovation including interior & exterior.





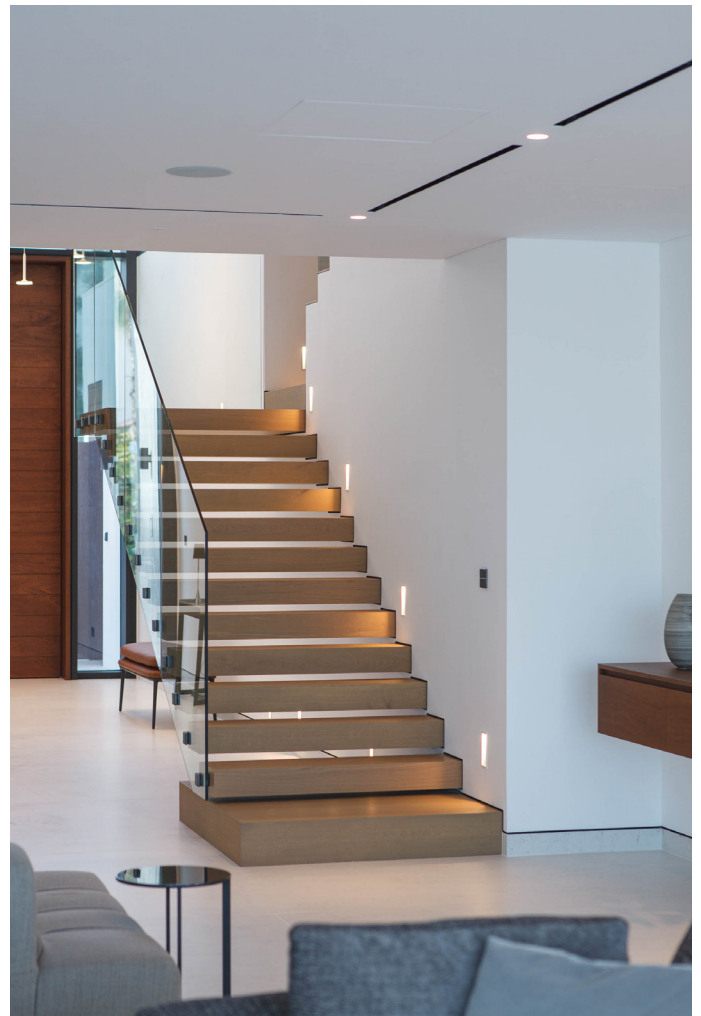


PRIVATE VILLA

LOCATION: Palm Jumeirah

WORK: Complete villa renovation including interior & exterior.









OFFICE

LOCATION: Jumeirah Lakes Towers

WORK: Complete office fitout.



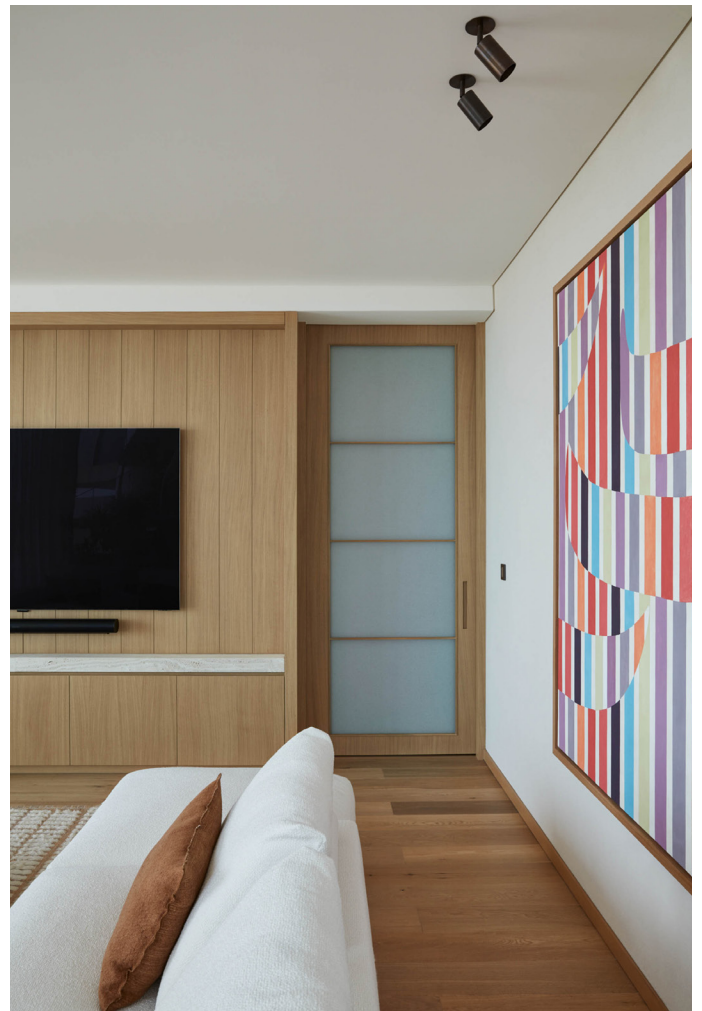
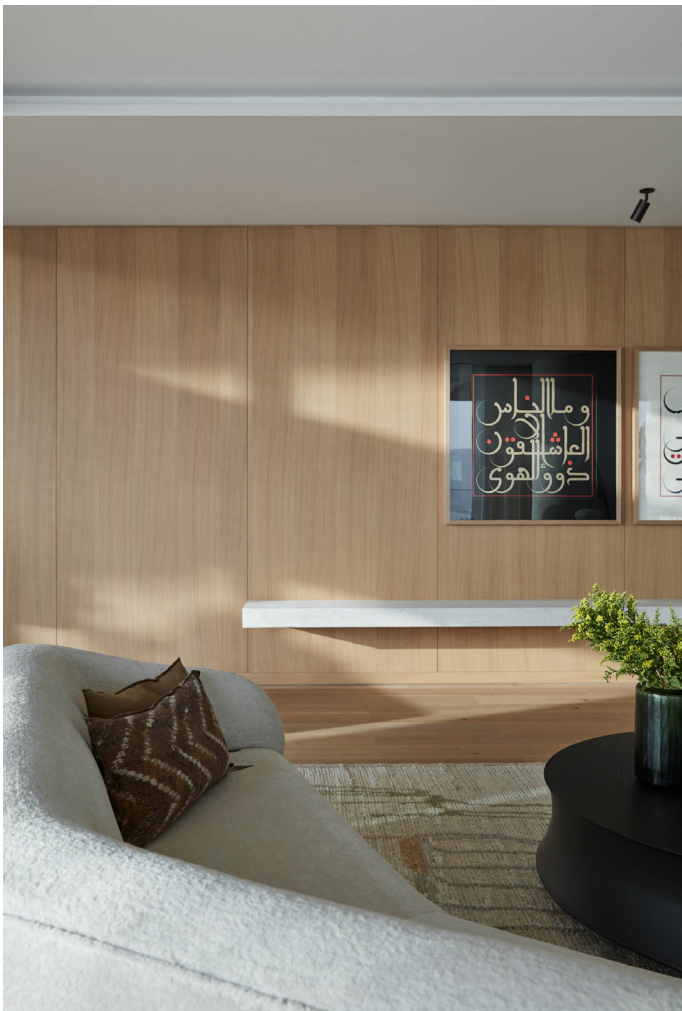


PRIVATE APARTMENT

LOCATION: Palm Jumeirah

WORK: Complete apartment renovation.







PRIVATE VILLA

LOCATION: Arabian Ranches

WORK: Complete interior renovation, including bespoke kitchen custom made furniture, tv unit, wooden floorings.





PRIVATE VILLA

LOCATION: Al Barari

WORK: Complete villa renovation including interior & exterior, wardrobes, kitchen bathroom, staircase, marble, tiles, glass, metal, wooden floorings.







PRIVATE APARTMENT

LOCATION: Sharjah

WORK: Custom made real wood furnitre.





CLUB HOUSE

LOCATION: Al Ain

WORK: Bespoke furniture, wardrobes, bathroom, kitchen, dining table.





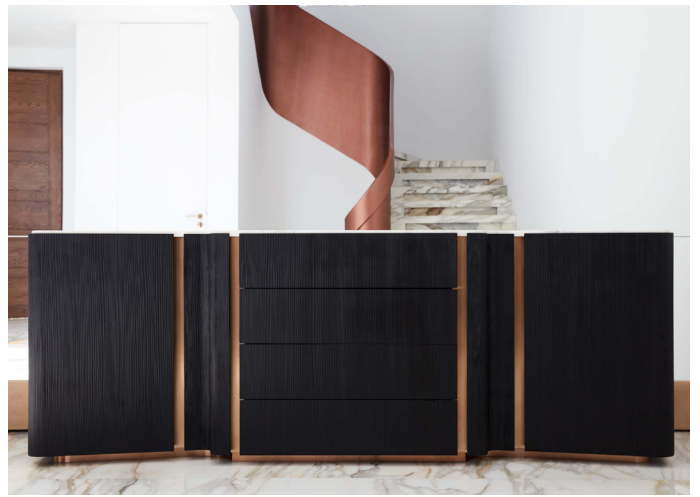




PRIVATE VILLA

LOCATION: Palm Jumeirah

WORK: Complete villa renovation bespoke joinery gypsum work, custom made kitchen, bathroom, library, marble tiles, flooring.



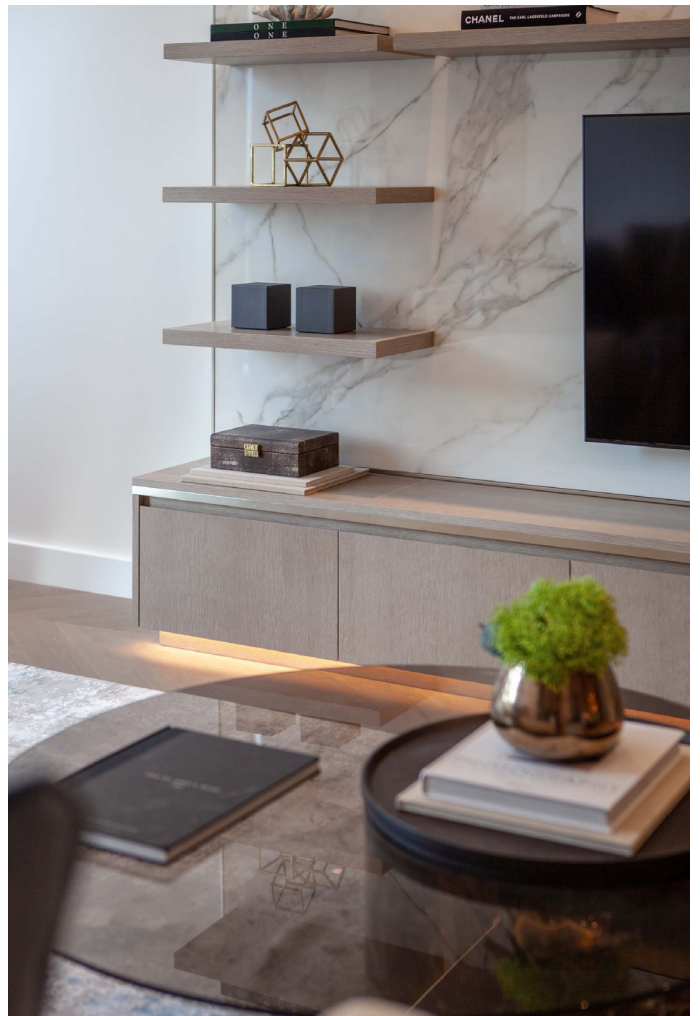


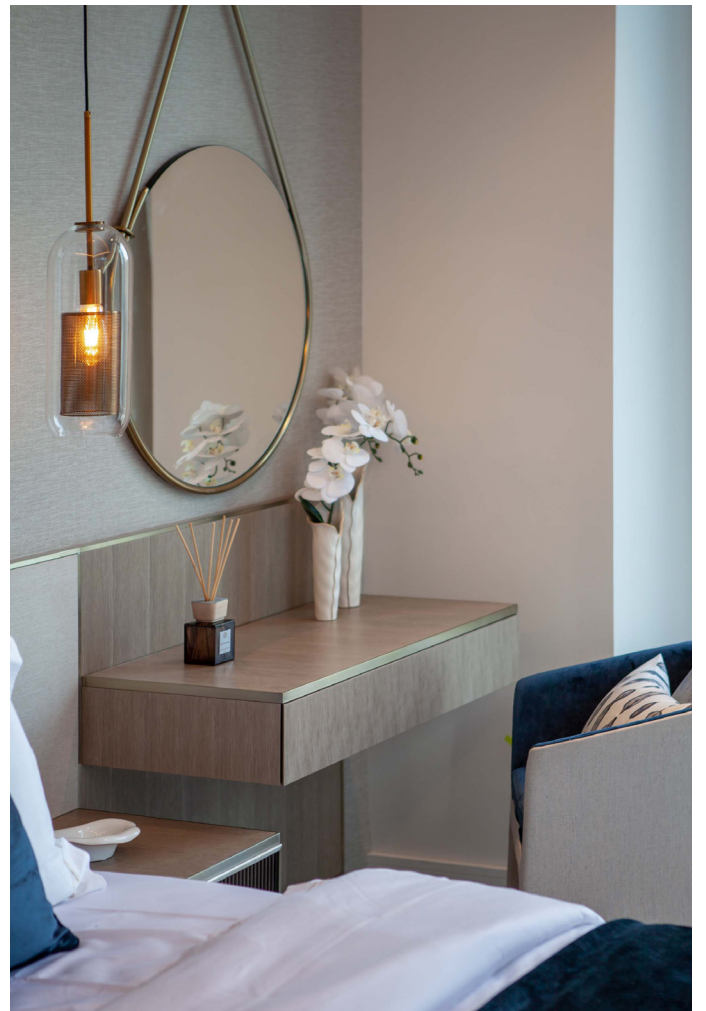


REGAL LONDON

LOCATION: Downton Dubai

WORK: cherwell Interiors completed full journey package for 115 luxury apartments in central London. and 75 hotel apartment in London.







PRIVATE APARTMENT

LOCATION: Al Barari

WORK: Bespoke kitchen and custom made furniture.





PRIVATE VILLA

LOCATION: Palm Jumeirah

WORK: Full interior fitout including bespoke furniture, kitchen, bathroom, marble tiles tv unit wooden flooring, marble, tiles, glass, metal, wooden flooring.







PRIVATE VILLA

LOCATION: Palm Jumeirah

WORK: Full interior fitout including bespoke furniture, kitchen, bathroom, marble tiles tv unit wooden flooring & exterior.



